

David Hollie
Ringold, Georgia

7-2-07 8-9 am 70-72°F 100% CC, No wind
Rly house, Ringold, GA

Wow! It's been a really long time since I've written in this field notebook!
I decided to do a little "survey" to see what kind of birds are breeding on or near the property. It will run for 10 days Mon-Fri this week and Mon-Fri next week, each count time period getting one hour later.

CANG-9	PUMA-6	YBCH-3+
GRHE-1	NRWS-2	SUTA-1
MODD-3	CACH-5+	SCTA-2+
YBCU-2	TUTI-3+	EATO-1
CHSW-6+	BANU-2	CHSP-2
DOWO-1	CARW-4+	SOSP-1
PIWO-1	BGGV-1	NOCA-10+
EAPH-1	EABL-2	INBU-5+
WEVI-2+	AMRO-2+	BHCO-1
BLJA-4	BRTH-8+	AMGO-5+
AMCR-10+	COYE-1	

oops! forgot WOTH-2

33 sp

7-2-07

Song: CHA-CHA-CHA... rot... choo-choo-choo
Song is a series of phrases repeated over & over. Often times "rot" is repeated in between phrases.
Call is a descending "Che W"

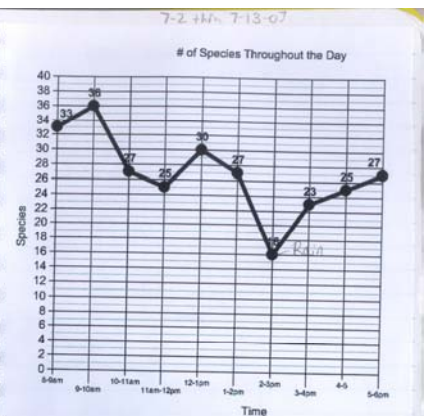
White Spectacle
Brownish back
White Throat
Yellow breast

7-2 thru 7-13-07

This is the complete list of the 10 day survey. Beside each bird is the number of days out of 10 it was present.

CANG-2/10	BLJA-7/10	YBCH-10/10
GRHE-3/10	AMCR-10/10	SUTA-9/10
GRHE-7/10	PUMA-4/10	SCTA-7/10
TUVU-1/10	NRWS-2/10	EATO-10/10
RSHA-1/10	BARS-5/10	CHSP-6/10
RTHA-2/10	CACH-8/10	SOSP-9/10
MODD-8/10	TUTI-8/10	NOCA-10/10
YBCU-7/10	WRNU-1/10	BLGR-5/10
CHSW-4/10	BANU-4/10	INBU-10/10
RTHU-4/10	CARW-5/10	BHCO-2/10
BEKI-4/10	BGGV-9/10	HOFF-2/10
RBWO-4/10	EABL-8/10	AMGO-10/10
DOWO-3/10	WOTH-8/10	
PIWO-3/10	AMRO-1/10	
EAPH-6/10	BRTH-5/10	
WEVI-10/10	NOCA-1/10	
YTVI-1/10	PIWA-2/10	
REVI-2/10	LWA-2/10	
	COYE-10/10	

49 species total



Above is a graph showing the number of species throughout the day. I was curious to see how the # of species fluctuated. I didn't notice a whole lot other than it was higher in the morning hours and it started to climb steadily in the evening.

7-2 thru 7-13-07

This is my route that I took every "survey" day. It is approx. 1/2 mile.

Occasionally I would come back to the house this way.

House

7-2 thru 7-13-07

of Species compared to maximum temp during the 1 hr time period

Temperature	Species
72	33
74	36
76	27
78	25
80	30
82	27
84	16
86	23
88	25
90	27

Above is a graph showing the number of species compared to the temperature. It is not in chronological order. Other than the rain, I see a little more pattern than the chronological order.